



The neighborhoods of Shibuya, Harajuku and Omotesando are the ultimate gathering spots for the young and trendy Tokyoites. Although known as Japan's fashion capital, this place is not just about fashion - it's also a heaven for art. This walk takes you through the backstreets of this neighborhood filled with treasures hidden in unassuming buildings, chic architecture and unexpected surprises to discover the trendiest places to eat and shop at. From cafes with contemporary decor to shops that seamlessly combine the old and new, this walk truly highlights Japan's most fascinating allure of fusing contrasting features into something unique.



Old & New



Discover More of Shibuya!

The word "Shibuya" does not only refer to the Shibuya station area, but also the whole Shibuya-ku and neighboring areas. Everyone knows the popular landmarks around Shibuya Station, such as the Hachiko statue, Shibuya Hikarie and SHIBUYA109 shopping mall, but there is so much more to explore - roadside shops and distinctive shopping streets in various areas of the city, historical and cultural facilities, parks etc. Discover all of Shibuya by taking a long walk following this map.



▼ Here is the special page of "Shibuya Sanpo".

www.tokyo-cci.or.jp/shibuya/hitoeki/
The other recommended walking courses similar to "Shibuya & Omotesando Walking Map" can be downloaded in PDF format. Check them out too!

Shibuya Branch of Tokyo Chamber of Commerce and Industry
Shibuya Ward Commerce and Industry Hall 7th fl.
1-12-5, Shibuya, Shibuya-ku, Tokyo, 150-0002
TEL: 03-3406-8141 | FAX: 03-3498-6569 | Office Hours: 9:00-17:00



渋谷
一駅
散歩

Go beyond
Shibuya Crossing

Shibuya &
Omotesando
<Neighborhood Walk>

MAP

「 Hip, Chic, Stylish 」

Old & New



東京商工会議所
The Tokyo Chamber of Commerce and Industry

Shibuya Station "Kirakira Shibuya"



Aside from the iconic Hachiko statue and Shibuya Crossing, another Instagram-worthy attraction near Shibuya Station will be a 2008 commissioned ceramic public art that conceptualizes a paradise where the ever-changing fragrance of new energy and culture lingers.

📍 Passage outside ticket gate (toward Ikebukuro) on B3, Tokyo Metro Shibuya Sta.

SHIBUYA CAST



A modern complex of offices for rent or share and relaxed cafes, SHIBUYA CAST sits between Shibuya and Harajuku, where the local vibes of these areas mix. The public space in front has a garden where people enjoy their lunch and various events take place.

📍 1-23-21, Shibuya, Shibuya-ku ⚡ 9 min on foot from Shibuya Sta. (No13 Exit) ☎ 03-5778-9178 🕒 Varies from shop to shop

CAT STREET



Known as one of the quieter backstreets of Harajuku, where Tokyoites go for fashion hunting and strutting their quirky fashion. Cat Street boasts a lot of vintage fashion shops, as well as unique hipster cafes, and being colorful, it's popular among Instagramers too.

📍 4~6, Jingumae, Shibuya-ku ⚡ about 10 min on foot from Shibuya Sta.

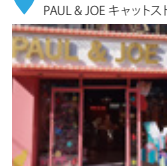
THE ROASTERY BY NOZZY COFFEE



Aside from a stylish industrial decor and excellent coffee, THE ROASTERY not only serves delicious treats but also prepares roasted coffee according to the temperature of the day. Truly, a place where one can enjoy drinking coffee as they like.

📍 5-17-13, Jingumae, Shibuya-ku ⚡ about 10 min on foot from Shibuya Sta. ☎ 03-6450-575 🕒 10:00-22:00 (Mon&Sat), 10:00-21:00 (Sun& public holiday)

PAUL & JOE Cat Street



Opened in August, this Paul & Joe store carries its signature items decorated with everyone's favorite felines. Here you can find all the latest chic cat-themed cosmetics, poaches and much more.

📍 Nest Harajuku IV 1-B 6-7-8, Jingumae, Shibuya-ku ⚡ about 8 min on foot from Omotesando Sta. ☎ 03-6427-7401 🕒 11:00-20:00



RAGTAG HARAJUKU



RAGTAG specializes in pre-loved designer fashion from almost all well-known fashion houses, with prices at a fraction of the original. A key feature is RAGTAG's detailed labelling system which truly demonstrates the respect RAGTAG has for these artistic creations.

📍 6-14-2, Jingumae, Shibuya-ku ⚡ 7 min on foot from Omotesando Sta. ☎ 03-6419-3770 🕒 11:00-20:00
🌟 Year end & New year

UTRECHT



An art bookstore that also doubles as a mini art gallery, UTRECHT provides a platform for young, up-and-coming Japanese artists to showcase their works. With exhibits and displays frequently changing, you'll always discover something new on each visit.

📍 Kari Mansion 2C, 5-36-6, Jingumae, Shibuya-ku ⚡ 11 min on foot from Omotesando Sta. ☎ 03-6427-4041 🕒 12:00-20:00
🌟 Mon. (the following day if Mon. is a public holiday)

Nakagawa Masashichi Shoten



Stepping into Nakagawa Masashichi Shoten, a sense of serenity immediately envelops you. Selling original products made in collaboration with inhouse designers and traditional Japanese craftsmen.

📍 5-43-7-1F, Jingumae, Shibuya-ku ⚡ 7 min on foot from Omotesando Sta. ☎ 03-3409-2260 🕒 11:00-19:00
🌟 Irregular holidays

CAFE & DINNING by hanami



Spacious and with a minimalistic decor, dining at Hanami makes one feel as though they were in a garden. Hanami pride themselves on their internationally-themed menu and pancakes are the cafe's speciality.

📍 5-3-8 AF Lohas St. Bldg 1-2F, Jingumae, Shibuya-ku ⚡ 3 min on foot from Omotesando Sta. ☎ 03-6897-8787 🕒 12:00-22:00 (LO.21:30) (Mon-Fri) 11:00-22:00 (LO.21:30) (Sat) 11:00-18:30 (LO.18:00) (Sun) 🌟 Tue

Tourindou Aoyama



A traditional sweets shop on the main streets of Omotesando, Tourindou's speciality is the Ko-taiyaki, small fish-shaped pancakes with red bean paste filling. With whole beans in the filling, the care that went into making an authentic traditional confection can be felt.

📍 3-6-12-1F, Hulic Aoyama Bldg. Kitaaoyama, Minato-ku ⚡ 1 min on foot from Omotesando Sta. ☎ 03-3400-8703 🕒 10:00-17:00 (Mon) 10:00-19:00 (Tue-Sun) 🌟 Jan.1-3