



This walk takes you around the backstreets of hip Sendagaya to find the cultural traditions of Japan, from Noh Theater to Shogi and ancient temples. Your stomach will be satisfied as you try cold pressed juices, curry, and delicious coffee and tea. Here, you can see the city change from its very cultural roots to its modern offerings. As the New National Stadium is being built, you can feel the anticipation of the upcoming Olympics. Peaceful, stylish, and relaxed, this area has a bit of everything that takes you off the beaten track to Harajuku, showing you a much different layer of the city.

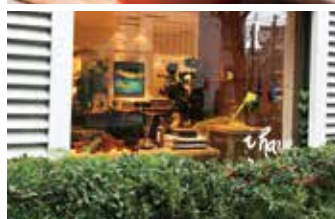


Old & New



## Discover More of Shibuya!

The word "Shibuya" does not only refer to the Shibuya station area, but also the whole Shibuya-ku and neighboring areas. Everyone knows the popular landmarks around Shibuya Station, such as the Hachiko statue, Shibuya Hikarie and SHIBUYA109 shopping mall, but there is so much more to explore – roadside shops and distinctive shopping streets in various areas of the city, historical and cultural facilities, parks etc. Discover all of Shibuya by taking a long walk following this map.



▼ Here is the special page of "Shibuya Sanpo".

[www.tokyo-cci.or.jp/shibuya/hitoeki/](http://www.tokyo-cci.or.jp/shibuya/hitoeki/)

The other recommended walking courses similar to "Sendagaya & Harajuku Walking Map" can be downloaded in PDF format. Check them out too!

Shibuya Branch of Tokyo Chamber of Commerce and Industry

Shibuya Ward Commerce and Industry Hall 7<sup>th</sup> fl.

1-12-5, Shibuya, Shibuya-ku, Tokyo, 150-0002

TEL: 03-3406-8141 | FAX: 03-3498-6569 | Office Hours: 9:00-17:00



渋谷  
一駅  
散歩

Go beyond  
Shibuya Crossing

## Sendagaya & Harajuku

<Neighborhood Walk>

MAP

“ An area changing in  
the spirit of the Olympics ”

Old & New



東京商工会議所  
The Tokyo Chamber of Commerce and Industry

## BRENTWOOD TERRACE



A calm outdoor area is situated at the back, providing a nice place to catch some sun. They offer free Wi-Fi and a large English/Japanese menu that has a selection of European and Californian dishes with some excellent lunch and tapas deals.

📍 1-20-3, Sendagaya, Shibuya-ku 🚶 2 min on foot from Sendagaya Sta. ☎ 03-6434-7686 🕒 11:00-23:00, 10:00-23:00 (Sat, Sun & public holiday)

## National Noh Theatre Exhibition room



It's worth visiting for the architecture alone. This beautiful building houses a Noh exhibition that changes seasonally. You'll find a traditional Japanese garden within its courtyard.

You can pick up tickets to see the latest Noh theatre show, or just stop by to see the costumes and masks.

📍 4-18-1, Sendagaya, Shibuya-ku 🚶 5 min on foot from Sendagaya Sta. ☎ 03-3423-1331 🕒 10:00-17:00 🗨 Mon (the following day if Mon is a public holiday) 🆓 free

## Monmouth Tea



Stop by for moreish muffins and refreshing milk tea. They have a full menu of interesting tea based drinks and snacks to enjoy. They're incredibly friendly and welcome any questions from people who are lost, even providing a map.

📍 1-21-2, Sendagaya, Shibuya-ku 🚶 4 min on foot from Sendagaya Sta. ☎ 03-3478-2357 🕒 7:00-24:00

## Hatomori Hachiman Shrine



A beautiful Shinto shrine with Buddhist temple roots and history. It's unique that it holds a mini Mt. Fuji worshipped as sacred. The shrine's name is associated with pigeons due to the wood pigeons that used to fly over the area, and you can pick up adorable pigeon fortunes from the shop.

📍 1-1-24, Sendagaya, Shibuya-ku 🚶 5 min on foot from Sendagaya Sta. ☎ 03-3401-1284

## Shogi Kaikan



The game of Shogi is around 500 years old and you can see some of its rich heritage here. Watch people play in the dojo, or pick up some amazing shogi souvenirs in the building - including handcrafted shogi sets. A fascinating space dedicated to the game.

📍 2-39-9, Sendagaya, Shibuya-ku 🚶 7 min on foot from Sendagaya Sta. ☎ 03-3408-6161 🕒 10:00-17:00 (Shop), 10:00-21:00 (Dojo) 🗨 Year-end, New Year holiday & irregular holidays 🆓 free



## Zuienji



A peaceful temple with large grounds to walk around. Being located on a quiet backstreet, it offers a calm temple visit and it's perfect for some traditional pictures. You can also enjoy various flowers like Ume (Japanese plum trees) here.

📍 2-35-1, Sendagaya, Shibuya-ku 🚶 7 min on foot from Sendagaya Sta. ☎ 03-3401-2610

## European-style Curry Restaurant "Kyurii"



In front of the currently under construction New National Stadium stands the old-fashioned looking curry restaurant Kyurii. At Kyurii you can enjoy delicious ufu-style curry at the spice level of your choice and chow down on scrumptious whole skin potatoes.

📍 2-33-1, Sendagaya, Shibuya-ku 🚶 8 min on foot from Sendagaya Sta. ☎ 03-3475-9777 🕒 11:30-19:00, 11:30-18:00 (Sat, Sun & public holiday) 🗨 Mon, Year-end & New Year holiday

## DAVID OTTO JUICE



Delicious cold pressed juice in a modern and open setting. Their most popular 'green' juice combines healthy vegetables with a lemon kick. You can create a customized detox juice at the shop. A truly healthy experience!

📍 2-6-3, Sendagaya, Shibuya-ku 🚶 10 min on foot from Sendagaya Sta. ☎ 03-6758-0620 🕒 9:00-19:30

## LOOPWHEELER Sendagaya



LOOPWHEELER makes high quality fashionable knitted clothings that last for years using hanging knitting machine which were popular in the mid-1960s. With the only branch in Tokyo, you can visit and see the hanging knit machine at work.

📍 3-51-3 -B1F, Sendagaya, Shibuya-ku 🚶 8 min on foot from Harajuku Sta. ☎ 03-5414-2350 🕒 12:00-19:30, 11:00-19:30 (Sat, Sun & public holiday) 🗨 Irregular holidays

## NESCAFE CAFE HARAJUKU



The Nescafe brand has its own cafe in Harajuku where you can sample a great variety of coffee drinks, some of which are the latest Nescafe recipes. The cafe with a terrace is spacious, elegant and chic, oozing calm and perfect for lounging and relaxing. In addition to coffee, food is also served.

📍 1-22-8, Jingumae, Shibuya-ku 🚶 2 min on foot from Harajuku Sta. (takeshitaguchi) ☎ 03-5772-2038 🕒 11:00-21:00 🗨 Irregular holidays