



Shibuya is well-known for its scramble crossing, but just a few minutes' walk away is a completely different area. Shoto is an upscale residential location, but it also has many museums and galleries. Strolling through the narrow streets, you will find an art museum with an exotic architecture, a museum created for blind people and a museum that has one of the biggest collections of Asian ceramics in the world. Take a break in a lovely park that used to be a tea field in during the Meiji era and have a lunch in one of the famous restaurants along the green Shoto Bunkamura Street with its lively local atmosphere. Follow it to Oku-Shibu (or inner Shibuya) to find an entertainment complex devoted to all forms of arts.

You can start the walk taking Keio Inokashira line from Shibuya to Shinsen and, when you go through the ticket gate, take the west exit and follow the signs.



Old & New



## Discover More of Shibuya!

The word "Shibuya" does not only refer to the Shibuya station area, but also the whole Shibuya-ku and neighboring areas. Everyone knows the popular landmarks around Shibuya Station, such as the Hachiko statue, Shibuya Hikarie and SHIBUYA109 shopping mall, but there is so much more to explore – roadside shops and distinctive shopping streets in various areas of the city, historical and cultural facilities, parks etc. Discover all of Shibuya by taking a long walk following this map.



▼ Here is the special page of "Shibuya Sanpo".

[www.tokyo-cci.or.jp/shibuya/hitoeki/](http://www.tokyo-cci.or.jp/shibuya/hitoeki/)

The other recommended walking courses similar to "Shinsen, Shoto & Harajuku Walking Map" can be downloaded in PDF format. Check them out too!

Shibuya Branch of Tokyo Chamber of Commerce and Industry

Shibuya Ward Commerce and Industry Hall 7<sup>th</sup> fl.

1-12-5, Shibuya, Shibuya-ku, Tokyo, 150-0002

TEL: 03-3406-8141 | FAX: 03-3498-6569 | Office Hours: 9:00-17:00



渋谷  
一駅  
散歩

Go beyond  
Shibuya Crossing

# Shinsen, Shoto & Harajuku

<Neighborhood Walk>

## MAP

Artistic experiences in  
an elegant neighborhood

Old & New



東京商工会議所  
The Tokyo Chamber of Commerce and Industry

## The Shoto Museum of Art



The Shoto Museum of Art was designed by Seiichi Shirai. He added two floors below ground while the light comes from a central atrium that accommodates a beautiful fountain. The museum promotes rotating exhibitions which covers a wide range of paintings, sculptures and crafts.

Shoto 2-14-14, Shibuya-ku ★ 5-min from Shinsen Stn. (Keio Inokashira Line) on foot ☎ 03-3465-9421 ☎ 10am-6pm (L.A. 5:30pm, Tue-Thu, Sat, Sun & public holidays), 10am-8pm (L.A. 7:30pm, Fri) ☎ Mon (open if Mon is a public holiday). The following day of public holidays (open if it's Sat or Sun), Period of changing exhibitions, Year-end and New Year holidays ☎ Depends on exhibitions

## Gallery TOM



The Gallery TOM is an art museum created in 1984 by Mr. and Mrs. Murayama for their blind son with the declaration: "We, the blind, we too have the right to enjoy Rodin". Their mission is to help blind and visually impaired people experience an art exhibition through touching the sculptures.

Shoto 2-11-1, Shibuya-ku ★ 7-min from Shinsen Stn. (Keio Inokashira Line) on foot ☎ 03-3467-8102 ☎ 11am-6pm ☎ Mon (open if Mon is a public holiday), Period of changing exhibitions ☎ 500JPY

## Nabeshima Shoto Park



Located in a quiet neighborhood, only ten minutes' walk from the busy Shibuya crossing, the area where the park is located used to be tea fields during the Meiji period. This lovely park has a pond surrounded by trees with a watermill, and hosts native species of turtles and fish. Benches around the park offer resting areas while kids can use the playground.

Shoto 2-10-7, Shibuya-ku ★ 8-min from Shinsen Stn. (Keio Inokashira Line) on foot

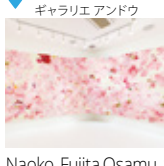
## Shoto Mar



A French & Italian restaurant where you can relax and enjoy a pleasant ambiance, with fresh food prepared using ingredients that comes directly from the farmers. Once you enter the restaurant, you will enjoy the charming atmosphere and also watch the chef working in an open kitchen without noticing the time pass.

Shoto 1-27-7, Shibuya-ku ★ 5-min from Shinsen Stn. (Keio Inokashira Line) on foot ☎ 03-3469-6920 ☎ 11:30am-15pm (Lunch, L.O. 14:30), 6pm-11pm (Dinner, L.O. 10pm) ☎ Mon

## GALERIE ANDO



Founded in 1987 and moved from Setagaya to the current location in 1995, this art gallery handles contemporary art from Japanese artists and has held more than 250 exhibitions since its opening, including pieces from Sekine Naoko, Fujita Osamu, Shinohara Takeshi and Uchiumi Satoshi.

Shoto 1-26-23, Shibuya-ku ★ 5-min from Shinsen Stn. (Keio Inokashira Line) on foot ☎ 03-5454-2015 ☎ 11:30am-7pm (Tue-Thu, Sat & public holidays), 11:30am-8pm (Fri) ☎ Sun & Mon (open during the exhibitions) ☎ Free

# Shinsen, Shoto & Harajuku MAP

Address Access Tel.  
Opening hours Closed Entry fee

0m 100m 200m 300m



## galetteria



A charming shop that prepares galettes, a savory crepe, in an ivy lined retro building that was inspired in by a house from the countryside of southern France. The interior décor is designed to invoke a nostalgic atmosphere, creating a nice ambience to have galettes prepared with fresh and organic ingredients. The most popular item on the menu is the ham, egg and cheese galette.

Shoto 1-26-1, Shibuya-ku ★ 5-min from Shinsen Stn. (Keio Inokashira Line) on foot ☎ 03-3467-7057 ☎ 11:30am-9pm (L.O. 8pm) ☎ Tue

## TOGURI MUSEUM OF ART



Created in 1987 by Tohru Toguri, who started to collect Japanese antiques during the 1940s after becoming concerned by the influx of Western culture, and worried that the next generations might not know what their ancestors had created and achieved. Museum collection now amounts to nearly 7,000 pieces, of which about one hundred are on display at a time, rotating 4 four times a year.

Shoto 1-11-3, Shibuya-ku ★ 10-min from Shinsen Stn. (Keio Inokashira Line) on foot ☎ 03-3465-0070 ☎ 10am-5pm (L.A. 4:30pm, Tue-Thu, Sat & public holidays), 10am-8pm (L.A. 7:30pm, Fri) ☎ Mon (the following day if Mon is a public holiday, open on the 4th Mon during exhibitions), Period of changing exhibitions, Year-end and New Year holidays ☎ 1,000JPY

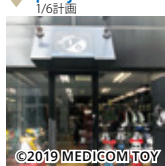
## Bunkamura



Opened to the public in 1989, this was the first large cultural-arts complex in Japan. The entertainment complex is devoted to all forms of the arts and contains a concert hall, a theater, a cinema, and a museum, as well as numerous shops and restaurants. There is also a bookshop full of art-related material.

Dogen-zaka 2-24-1, Shibuya-ku ★ 7-min from Shinsen Stn. (Keio Inokashira Line) on foot ☎ 03-3477-9111 ☎ 10am- (closing time depends on shops & facilities) ☎ New Year's Day (other holidays depends on shops & facilities) ☎ 1,000JPY

## project1/6



A special store of MEDICOM TOY, one of Japan's best-known toy manufacturing companies. They hold a wide range of figure lines and collections inspired by manga, anime and worldwide pop culture like the "BE@RBRICK" which collaborates with worldwide artists, brands and companies.

Udagawa-cho 37-10 Mani Bldg. 1F, Shibuya-ku ★ 10-min from Shinsen Stn. (Keio Inokashira Line) on foot ☎ 03-3467-7676 ☎ 11am-8pm Year-end and New Year holidays

## SHIBUYA Rose Garden



Just a few minutes from Shibuya station is a beautiful rose garden boasting many different varieties and colors. The roses were donated by the Kawazu Bagatelle Park (established as a sister park of Jardin de Bagatelle of Paris) in Shizuoka.

Jinnan 1-6, Shibuya-ku ★ 11-min from Harajuku Stn. (JR) on foot

※Please note that the time it takes to go to destinations from the nearest stations is a rough indication.